



Toward developing mixed-use facilities to energize people of diverse values, and enhancing disaster preparedness and environmental performance in urban areas.



Nihonbashi Muromachi Mitsui Tower stands at the corner of Chuo-dori and Edo-dori Avenues, and is a major new addition to the Nihonbashi area, which lies between the Kanda and Tokyo Station areas. The building features a hall and conference facilities suitable for a wide range of uses, a large outdoor plaza with an extensive roof and landscaping rich in greenery to provide liveliness, and a commercial area with 31 shops, including eslite spectrum nihonbashi and another Japan-first outlet. Through its mixed-use and intangible value-added features, the building exemplifies a mixed-use facility development that will energize a diverse range of visitors. Moreover, the development includes an energy plant that is part of the Nihonbashi Smart Energy Project. Under this project, the first in Japan, the plant is capable of supplying not only the building but the surrounding area with electric power and heat on a stable basis. This enhances energy resilience with uninterrupted energy supply in emergencies,* as well as energy efficiency and CO₂ reduction for eco-friendly neighborhood creation. Mitsui Fudosan will continue to promote Urban Smart Cities to meet ESG challenges.

*Energy resilience: robustness of energy supply networks

▶ Nihonbashi Muromachi Mitsui Tower (Chuo-ku, Tokyo)



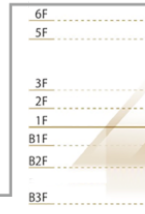
3F: Muromachi Mitsui Hall & Conference
Main hall (approx. 375 m²) and three conference rooms



5F to 25F: office floors



5F to 6F: Office Sky Lobby



(1) Office Sky Lobby



Expanded membership facilities and services for tenant enterprises with diverse workstyles

To create more richly evolved offices serving not only as places to work, but as places to actualize enriched business life, we offer Mitsui Office for Tomorrow, a shared space on the fifth and sixth floors where tenant enterprise members can access facilities and services.



▶ Lounge space



▶ Conference room foyer

(2) Commercial floors

COREDO 室町テラス

COREDO Muromachi Terrace September 2019 grand opening
31 shops including eslite spectrum nihonbashi and another Japan-first outlet

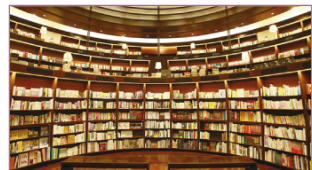
We're giving customers a new experience in historic, traditional Nihonbashi, with places where they can spend quality time. These include two shops opening in Japan for the first time (one of them being eslite spectrum nihonbashi), five opening for the first time in the Kanto area, 10 opening for the first time in commercial facilities, and 10 with unique new business models. In all, there are 31 shops offering first-class domestic and international dining as well as merchandise and experiences for the discerning.



▶ B1 commercial facility Lively dining floor with direct subway access



▶ 1F commercial facility Comfortable gathering space connected to the lively plaza



▶ 2F eslite spectrum nihonbashi



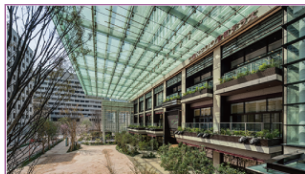
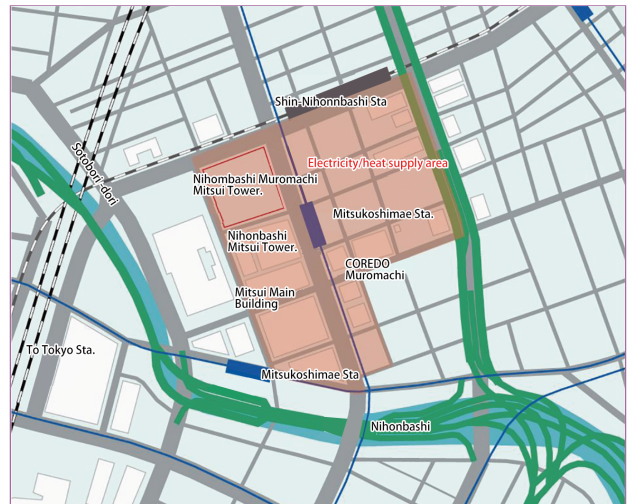
▶ A lifestyle and reading culture wonderland and a source for creative and diverse cultural information

(3)Energy plant



The Nihonbashi Smart Energy Project is renewing the energy supply of the entire Nihonbashi area and promoting Urban Smart Cities

Mitsui Fudosan, in collaboration with Tokyo Gas Co., Ltd., has built an energy plant in the complex to supply energy to nearby buildings and commercial facilities on an ongoing basis, not only in emergencies. This is the first energy network of its kind in Japan. Generating power with gas from a medium-pressure line, which is highly reliable in disasters, ensures stable energy supplies and enhanced, multifaceted energy resilience, and contributes to the creation of reliable, safe neighborhoods. The aim is to realize local energy consumption supported by local production, with energy efficiency and CO₂ reduction for eco-friendly neighborhood creation, by making effective use of waste heat produced during the power generation process.



- ▶ A large outdoor plaza (approx. 1,500 m²) with an extensive roof and landscaping rich in greenery to provide liveliness
- ▶ Gas cogeneration

◀ &People Diverse workstyles and a diverse workforce

&Global Newyork Manhattan Hudson Yards London Television Centre ▶

[Privacy Policy](#)

[Basic Policy on Specific Personal Information](#)

[Concerning Protection of Personal Information](#)

[Concerning Cookies and Access Logs](#)

[Usage Notice](#)

© 2020 Mitsui Fudosan Co., Ltd.